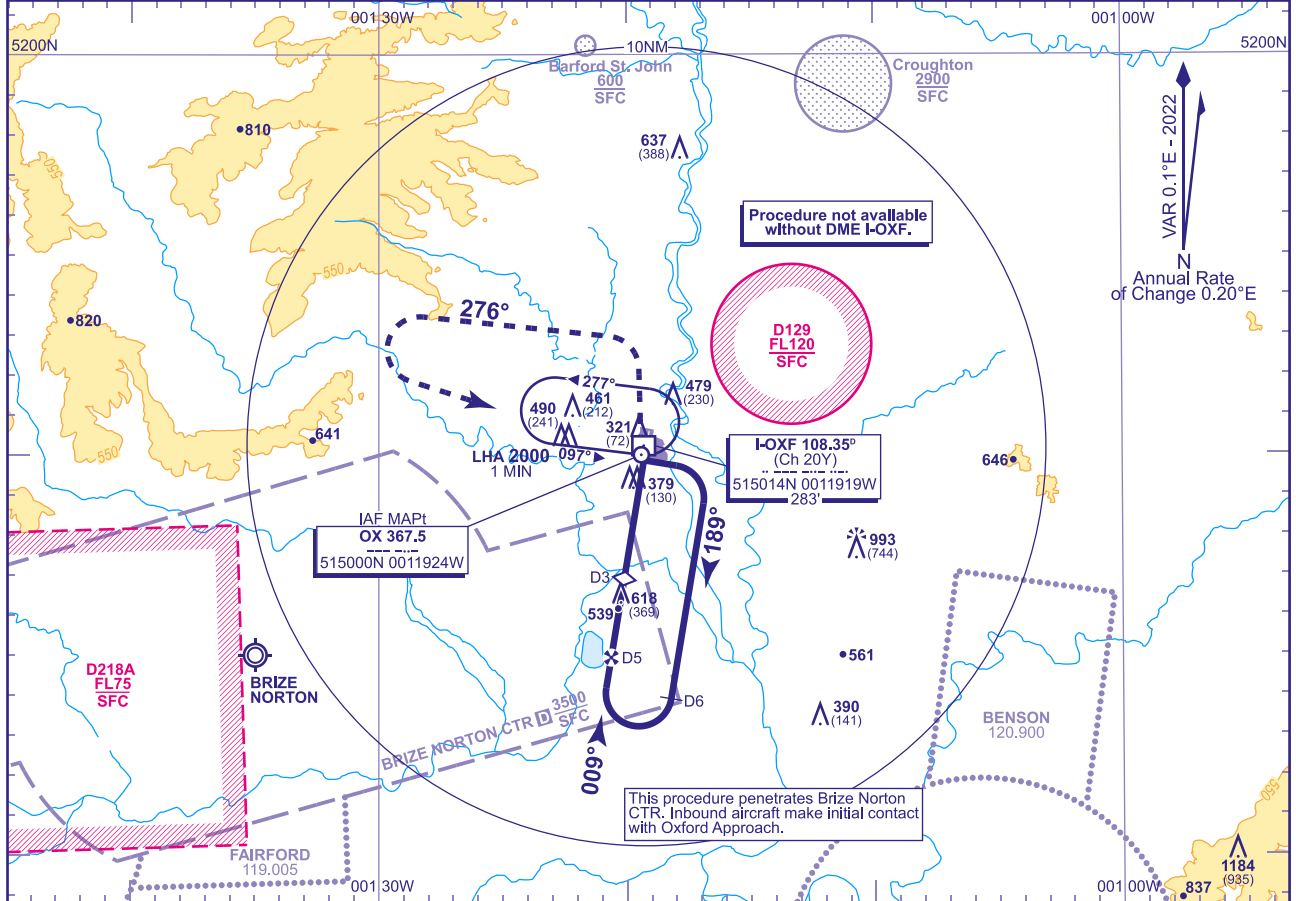


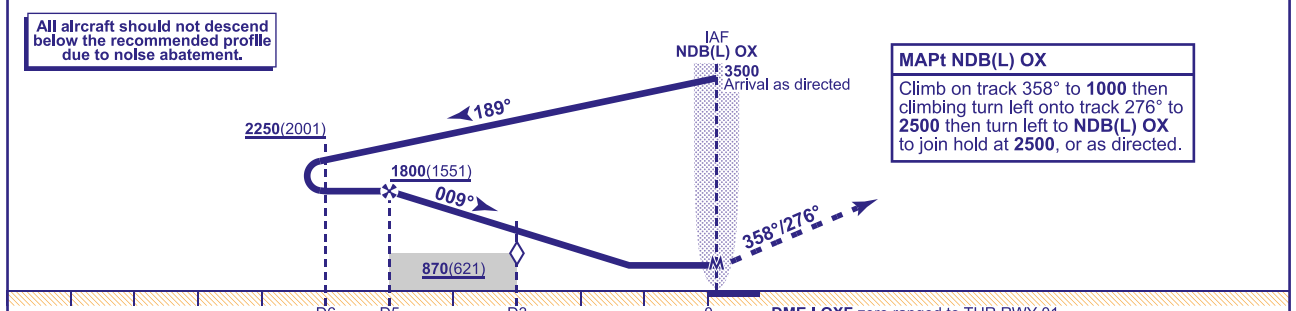
INSTRUMENT APPROACH CHART - ICAO

OXFORD
NDB(L)
RWY 01
(ACFT CAT A,B,C)

	APP	125.090	OXFORD APPROACH	AD ELEVATION	263
	TWR	133.430	OXFORD TOWER	THR ELEVATION	249
	RAD	125.090	OXFORD RADAR	OBSTACLE ELEVATION 1184 AMSL (935) (ABOVE THR)	
		119.980	OXFORD DIRECTOR (see note 3)		
		121.955	OXFORD GROUND (see note 3)	BEARINGS ARE MAGNETIC	
	ATIS	136.230	OXFORD ATIS		
					TRANSITION ALTITUDE 6000



RECOMMENDED PROFILE Gradient 4.94%, 300FT/NM			
DME I-OXF	5	4	3(SDF)
ALT(HGT)	1800(1551)	1480(1231)	1180(931)



Aircraft Category		A	B	C	Rate of descent	DME I-OXF zero ranged to THR RWY 01					
OCA (OCH)	Procedure	700(451)	700(451)	700(451)		G/S KT	160	140	120	100	80
		800(537)	800(537)	1100(837)		FT/MIN	800	700	600	500	400
VM(C)OCA (OCH AAL)		Total Area	800(537)	800(537)	1100(837)						

NOTE 1 Aircraft will normally be required to hold not lower than 3500 or equivalent FL.
2 Entry into racetrack procedure restricted to Sector 3 entry from inbound leg (097°M) of holding pattern.
3 Only when directed by ATC

WARNING 1 The established NDB hold is impacted by EGD129 activity. ATC Oxford will co-ordinate the use of the hold in association with the instrument procedures with regard to promulgated activity in EGD129.